

SERVICES

- Residential Electric Service
- Commercial Electric Service
- Industrial Electric Service
- Security Lighting
- Municipal Street Lighting

For New Service:
318-251-8675

For Security Lighting:
318-251-8675

For Billing Inquiries:
318-251-8675

**For Emergencies Involving
Power Outages:**
318-255-1316

City of Ruston Light & Power

LIGHT & POWER

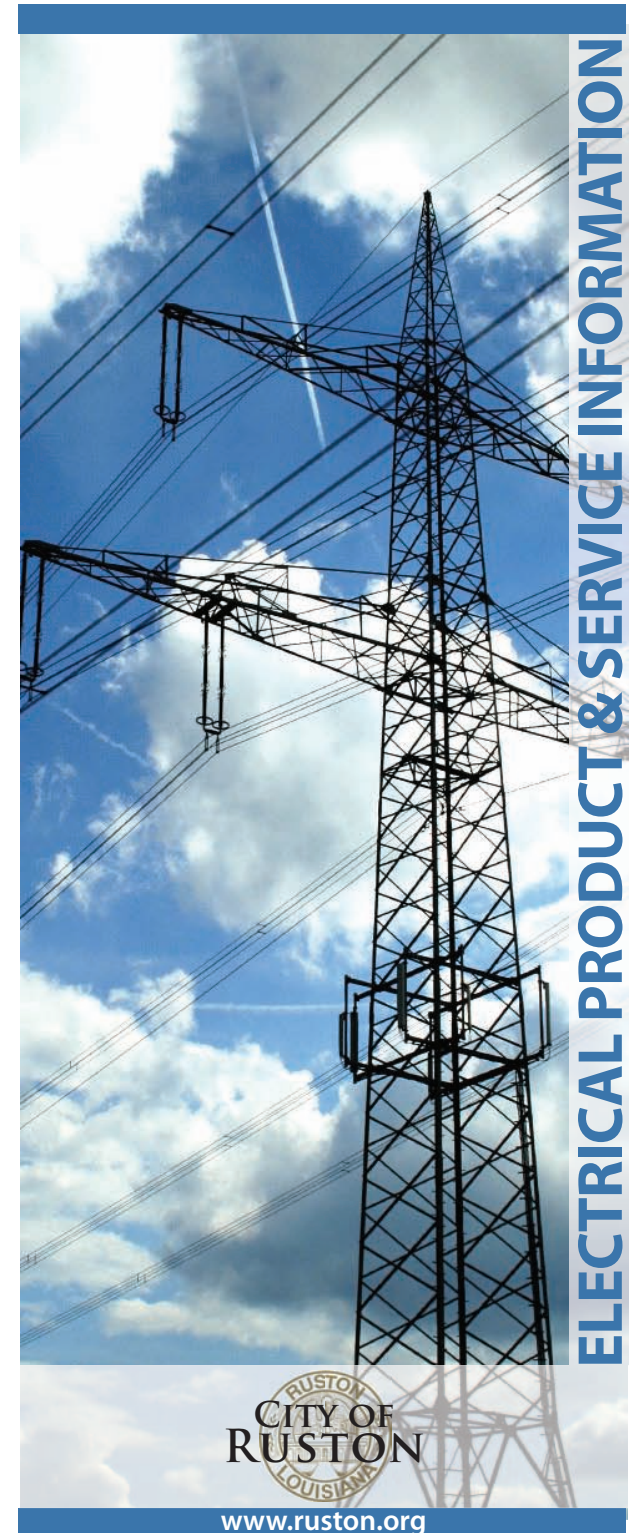
P. O. Box 2069
Ruston, Louisiana 71273-2069

Phone: (318) 255-1316
Fax: (318) 242-7708

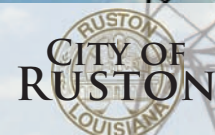
Email: Light&Power@ruston.org

Normal Business Hours
Monday - Friday
7:00 am - 3:30 pm

For after hours emergency call
318-255-1316



ELECTRICAL PRODUCT & SERVICE INFORMATION



www.ruston.org

ELECTRICAL DISTRIBUTION

Electrical Distribution installs and maintains underground and overhead electrical distribution equipment. Departmental duties are directed toward customer satisfaction, reliability, and public safety. Light & Power maintains approximately 200 miles of transmission and distribution lines supplying over 10,000 customers. We also provide street and security lighting installation and maintenance, annual Christmas decoration installation, and American and Louisiana Tech flag displaying.



Maintains NERC certified Energy Balancing Authority, providing clean efficient energy to the citizens of the City of Ruston. Our electric service is monitored 24 hours/day, 365 days/year using a computerized system along with a continually updated Geographic Information System. This division also provides night and emergency dispatch services for all City provided utilities, control area monitoring services, transmission and distribution of energy.

SYSTEM OPERATIONS

URBAN FORESTRY

Maintains power line right of way clearance for outage management and public safety. Proper line clearance is critical for providing reliable electrical service. Our education and beautification programs provide an annual Arbor Day tree planting program for local 6th graders, participation in the national Tree Line and Tree City USA program sponsored by the National Arbor Day Foundation, Tree Power program sponsored by the American Public Power Association, and public education through speaking engagements.



Maintains meters and collects readings for the monthly billing cycle from approximately 10,000 electric and 8,500 water customers.

METERING

POWER OUTAGES

- The City of Ruston Light & Power Department maintains a 24-hour dispatch center for emergencies.
- Electric system activity is continuously monitored for stability and service level.
- We use state of the art communications methods to access our equipment at the electric substations in order to insure service is adequate at all times.
- A network based Geographical Information System is updated with system additions and upgrades to assist with outage management. Please report any electrical safety hazards, outages, or emergencies to our dispatch center.
- 24-hour emergency dispatch center 318-255-1316

