

# HOUSEHOLD HAZARDOUS WASTE PROGRAM

## Household Hazardous Materials Collection Days

**When:** Second Saturday of each month

**Where:** Public Works Complex  
701 E. Tennessee

**Time:** 8:30 a.m.—11:30 a.m.

### Materials that will be accepted at this time:

- Fluorescent Light Bulbs
- Batteries (lead-acid, NiCad, alkaline)
- Tires
- White Goods (appliances)
- Furniture

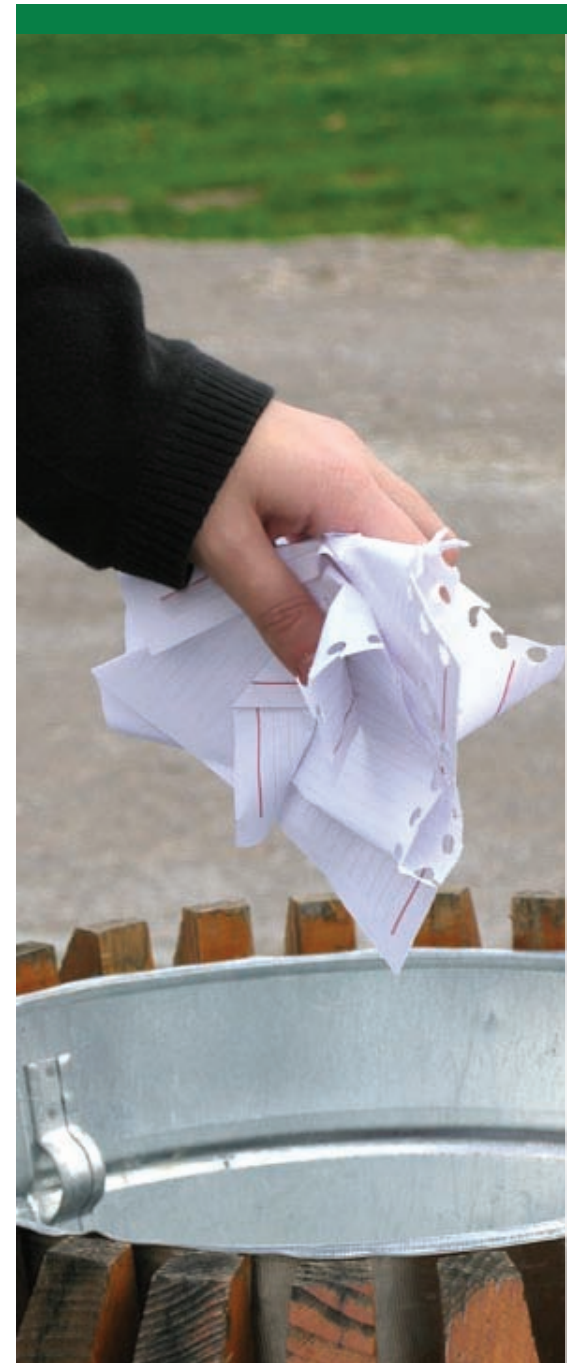
**For more information call**  
318-242-7703 or 318-251-8641



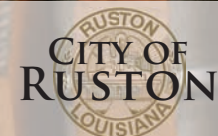
Call 318-242-7703 for Household Hazardous Waste project information or to become a project volunteer.

# City of Ruston Public Works Department

701 E. Tennessee Ave.  
Ruston, LA 71270  
Phone: 318-242-7703  
Fax: 318-242-7708  
Email: [publicworks@ruston.org](mailto:publicworks@ruston.org)



# RESIDENTIAL GARBAGE & TRASH COLLECTION



[www.ruston.org](http://www.ruston.org)

### Where do I place my container for waste collection?

Residential garbage containers should be placed on the curb with the handle and wheels pointed toward the house.

### What if I have more garbage than will fit in my container?

If all of the household garbage will not fit into the container, one plastic bag, sealed securely, may be placed on top of the container.

### Can I leave my container at the street?

All containers must be removed from the street's edge within a 24-hour period after pick up.

### When will my household garbage container be emptied?

Regular household garbage is collected twice weekly. Call the Public Works office to find out when your area is scheduled for collection.

### Does the City have a program for citizens with special needs?

The City has a special assistance program for customers living in households where no one is physically able to roll the garbage container to the curb. Call the Public Works Office (318-242-7703) for more information about the back door service program.

### Who do I call if my container is in need of repair?

Public Works Department,  
318-242-7703

### How should I dispose of yard waste, furniture and appliances?

These items should be placed near the street for collection. Be sure to place these items at least five feet from mail boxes, poles, hydrants, meters or trees. Please do not place items on the street or in the drainage ditches. We cannot pick-up batteries, tires and creosote lumber.



### Types of Residential Trash:

- Limbs six feet or less, leaves, or pinestraw
- Building materials six feet or less (lumber, bricks, etc...)
- Commercial contractors are responsible for removing their own debris
- Small appliances/metal goods
- Furniture

Under normal conditions trash trucks complete their assigned routes every two weeks.

