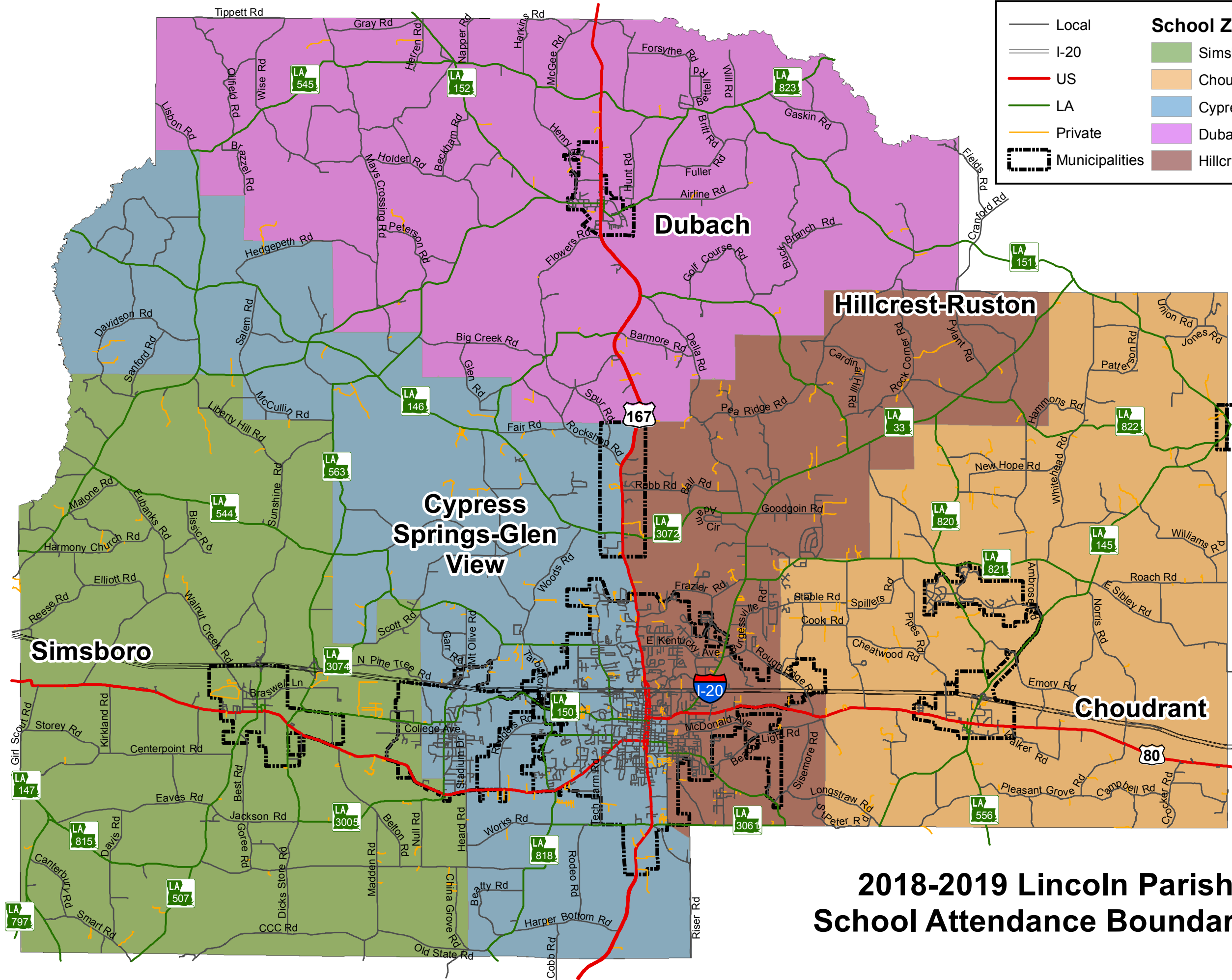




	Local		<b>School Zones</b>
	I-20		Choudrant
	US		Cypress Springs/Glen View
	LA		Dubach
	Private		Hillcrest/Ruston Elem.
	Municipalities		



## 2018-2019 Lincoln Parish School Attendance Boundaries



318.513.6450 Office  
318.513.6469 Fax  
<http://gis.lincolnparish.org>

The Lincoln Parish GIS Office makes no claim as to the accuracy or completeness of the data shown on this map. Land boundary information shown hereon does not constitute a survey product. Further, always consult the appropriate authority to verify information before building or purchasing land or structures.